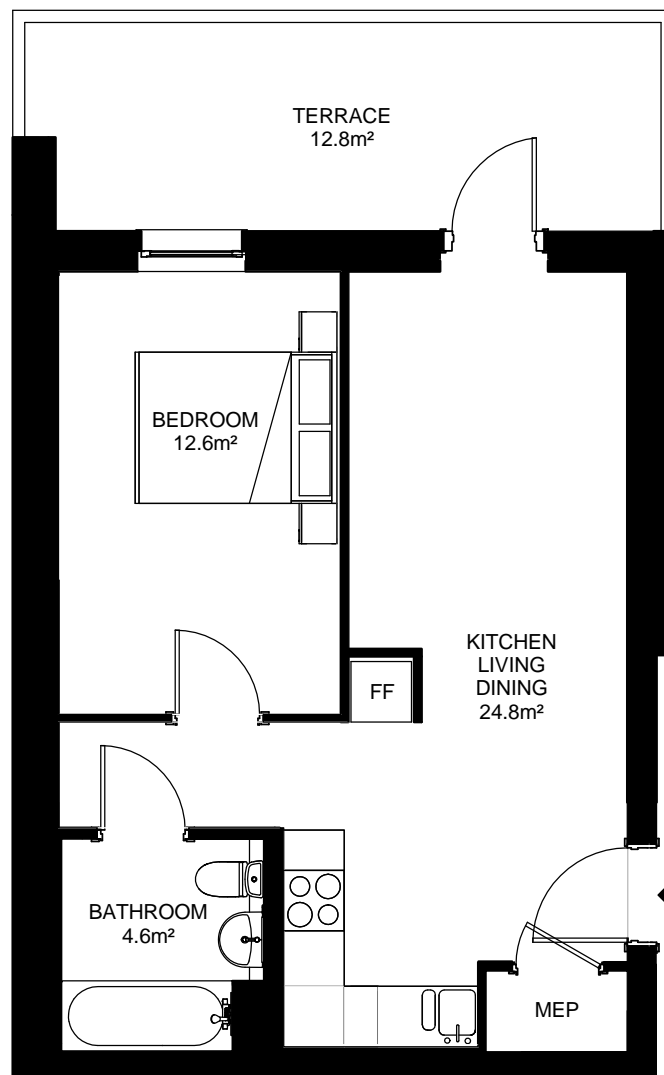


Churchyard Row, London, SE11



Apartment 83, 7 Churchyard Row

1 x Ground Floor

1 Bed / 2 Person - 43.5 m² / 468.1ft²

Bedroom - 12.6m² / 135.6ft²

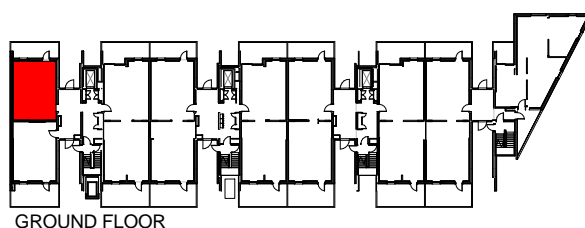
K/D/Living Room - 24.8m² / 266.8ft²

Bathroom - 4.6m² / 49.5ft²

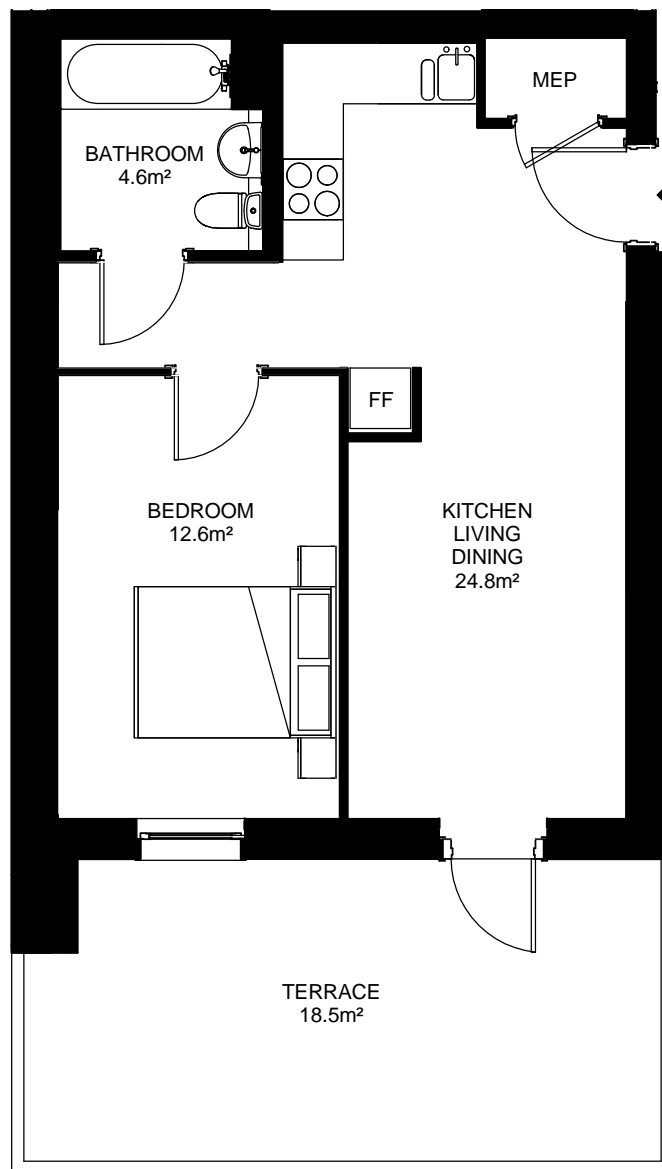
Terrace - 12.8m² / 137.7ft²

Additional information:

- Communal lift access
- Balcony Terrace
- Council Tax Band = D



Churchyard Row, London, SE11



Apartment 84, 7 Churchyard Row

1 x Ground Floor

1 Bed / 2 Person - 43.5 m² / 468.1ft²

Bedroom - 12.6m² / 135.6ft²

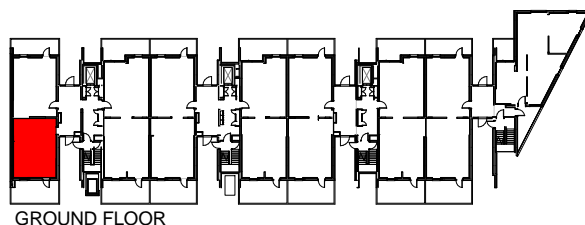
K/D/Living Room - 24.8m² / 266.8ft²

Bathroom - 4.6m² / 49.5ft²

Terrace - 18.5m² / 199.1ft²

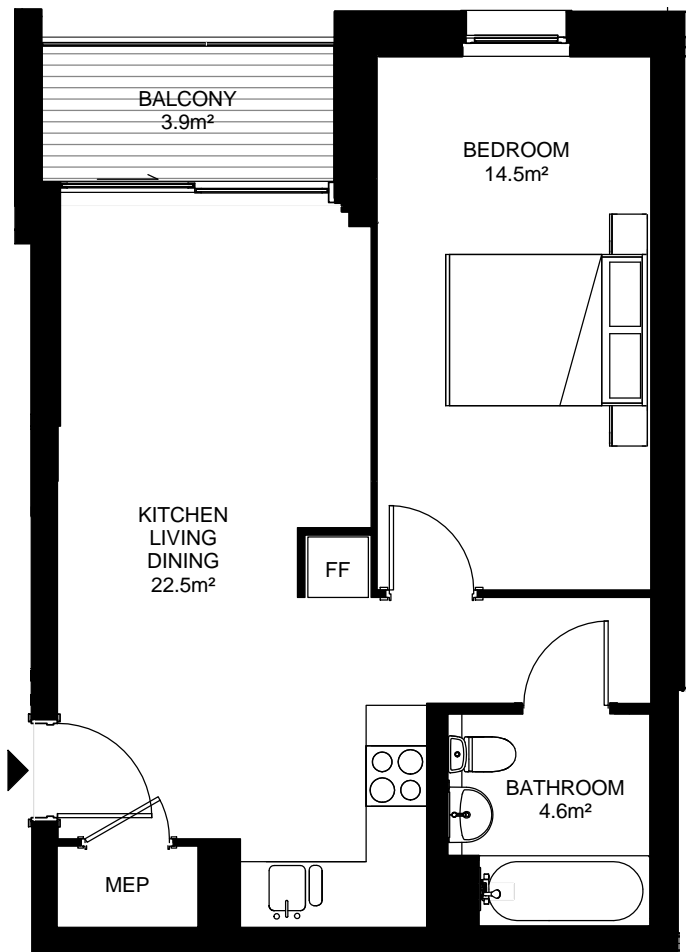
Additional information:

- Communal lift access
- Balcony Terrace
- Council Tax Band = D



GROUND FLOOR

Churchyard Row, London, SE11



Apartment 55, 5 Churchyard Row
Apartment 59, 5 Churchyard Row
Apartment 63, 5 Churchyard Row
Apartment 67, 5 Churchyard Row
Apartment 71, 5 Churchyard Row

Apartment 88, 7 Churchyard Row
Apartment 92, 7 Churchyard Row
Apartment 96, 7 Churchyard Row
Apartment 100, 7 Churchyard Row
Apartment 104, 7 Churchyard Row

2 x First Floor
2 x Second Floor
2 x Third Floor
2 x Fourth Floor
2 x Fifth Floor

1 Bed / 2 Person - 45.6 m² / 490.7ft²

Bedroom - 14.5m² / 156.0ft²

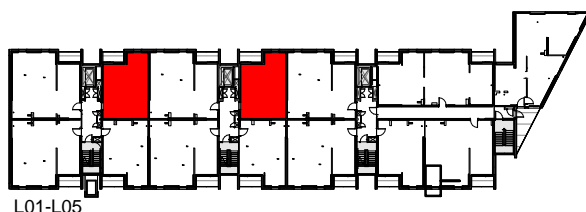
K/D/Living Room - 22.5m² / 242.1ft²

Bathroom - 4.6m² / 49.5ft²

Terrace - 3.9m² / 42.0ft²

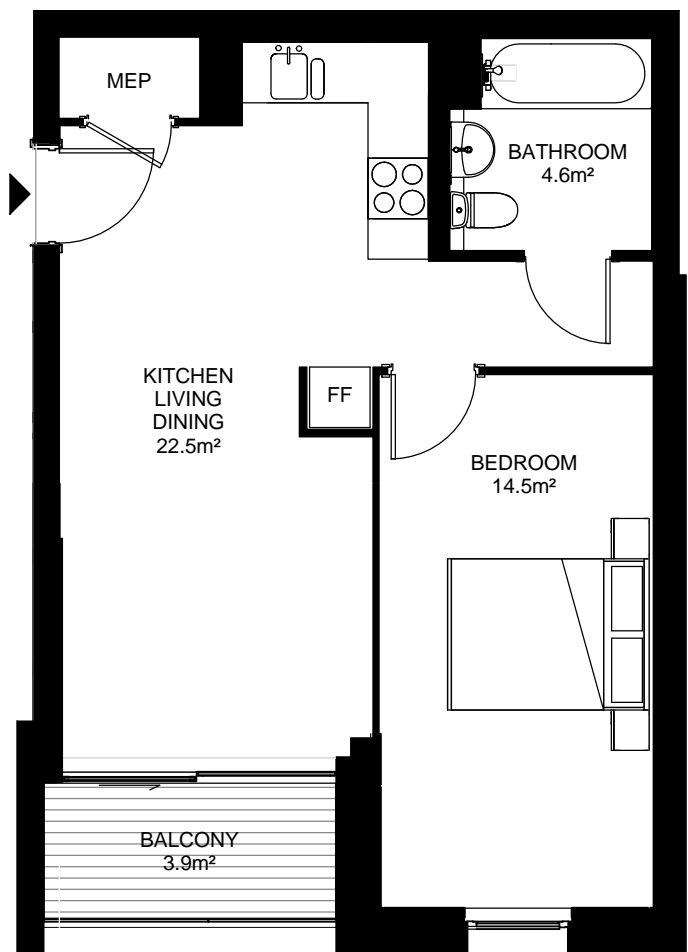
Additional information:

- Communal lift access
- Balcony Terrace
- Council Tax Band = D



L01-L05

Churchyard Row, London, SE11



Apartment 28, 3 Churchyard Row
Apartment 31, 3 Churchyard Row
Apartment 34, 3 Churchyard Row
Apartment 37, 3 Churchyard Row
Apartment 40, 3 Churchyard Row

Apartment 56, 5 Churchyard Row
Apartment 60, 5 Churchyard Row
Apartment 64, 5 Churchyard Row
Apartment 68, 5 Churchyard Row
Apartment 72, 5 Churchyard Row

Apartment 89, 7 Churchyard Row
Apartment 93, 7 Churchyard Row
Apartment 97, 7 Churchyard Row
Apartment 101, 7 Churchyard Row
Apartment 105, 7 Churchyard Row

3 x First Floor
3 x Second Floor
3 x Third Floor
3 x Fourth Floor
3 x Fifth Floor

1 Bed / 2 Person - 45.6 m² / 490.7ft²

Bedroom - 14.5m² / 156.0ft²

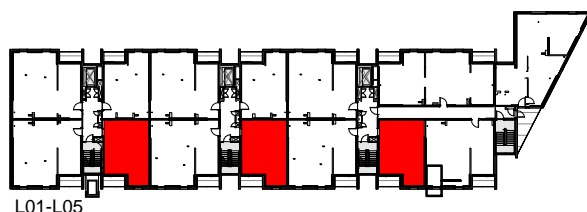
K/D/Living Room - 22.5m² / 242.1ft²

Bathroom - 4.6m² / 49.5ft²

Terrace - 3.9m² / 42.0ft²

Additional information:

- Communal lift access
- Balcony Terrace
- Council Tax Band = D



L01-L05

Churchyard Row, London, SE11



Apartment 26, 3 Churchyard Row
Apartment 29, 3 Churchyard Row
Apartment 32, 3 Churchyard Row
Apartment 35, 3 Churchyard Row
Apartment 38, 3 Churchyard Row

Apartment 53, 5 Churchyard Row
Apartment 57, 5 Churchyard Row
Apartment 61, 5 Churchyard Row
Apartment 65, 5 Churchyard Row
Apartment 69, 5 Churchyard Row

Apartment 86, 7 Churchyard Row
Apartment 90, 7 Churchyard Row
Apartment 94, 7 Churchyard Row
Apartment 98, 7 Churchyard Row
Apartment 102, 7 Churchyard Row

3 x First Floor
3 x Second Floor
3 x Third Floor
3 x Fourth Floor
3 x Fifth Floor

2 Bed / 4 Person - 71.7 m² / 771.5ft²

Bedroom 1 - 14.9m² / 160.3ft²

Bedroom 2 - 13.6m² / 146.3ft²

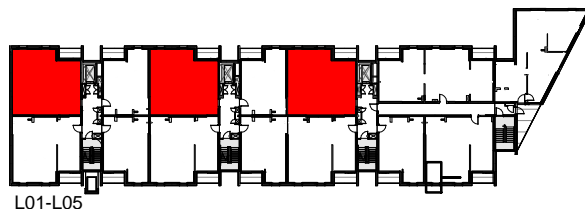
K/D/Living Room - 34.1m² / 366.9ft²

Bathroom - 5.5m² / 59.2ft²

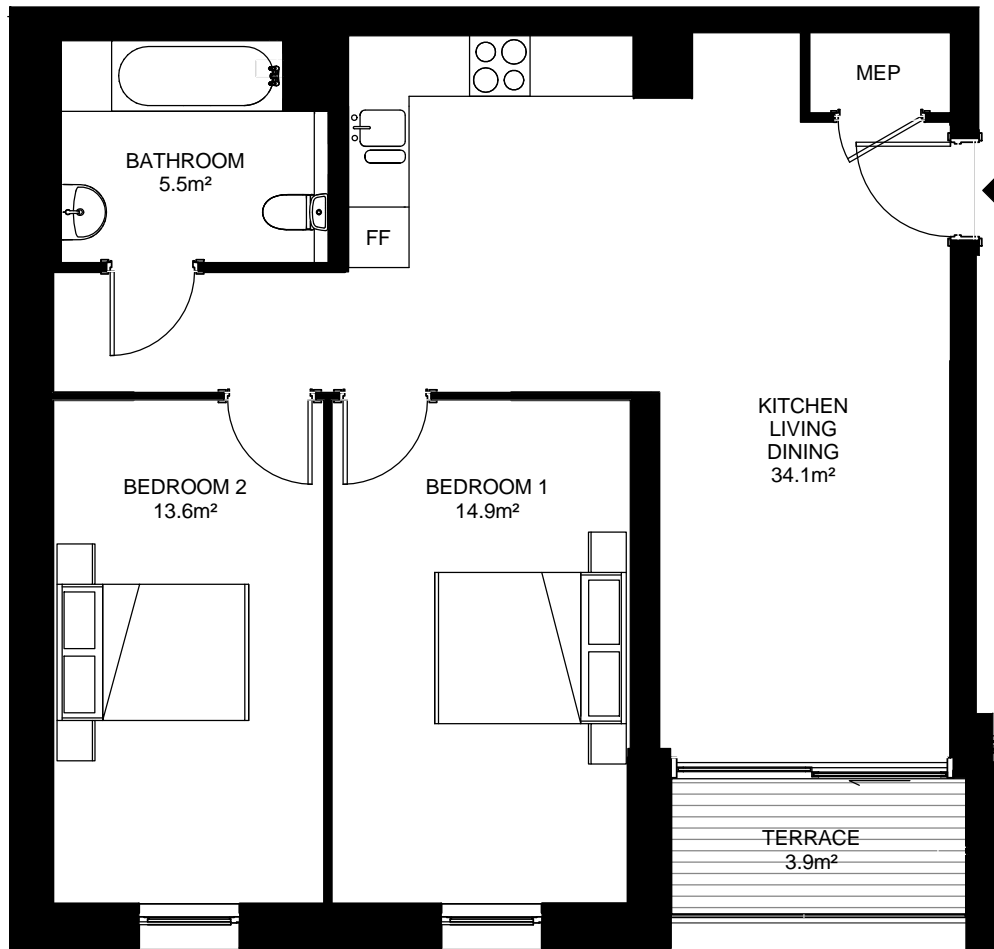
Terrace - 3.9m² / 42.0ft²

Additional information:

- Communal lift access
- Balcony Terrace
- Council Tax Band = E



Churchyard Row, London, SE11



Apartment 27, 3 Churchyard Row
Apartment 30, 3 Churchyard Row
Apartment 33, 3 Churchyard Row
Apartment 36, 3 Churchyard Row
Apartment 39, 3 Churchyard Row

Apartment 54, 5 Churchyard Row
Apartment 58, 5 Churchyard Row
Apartment 62, 5 Churchyard Row
Apartment 66, 5 Churchyard Row
Apartment 70, 5 Churchyard Row

Apartment 87, 7 Churchyard Row
Apartment 91, 7 Churchyard Row
Apartment 95, 7 Churchyard Row
Apartment 99, 7 Churchyard Row
Apartment 103, 7 Churchyard Row

3 x First Floor
3 x Second Floor
3 x Third Floor
3 x Fourth Floor
3 x Fifth Floor

2 Bed / 4 Person - 71.7 m² / 771.5ft²

Bedroom 1 - 14.9m² / 160.3ft²

Bedroom 2 - 13.6m² / 146.3ft²

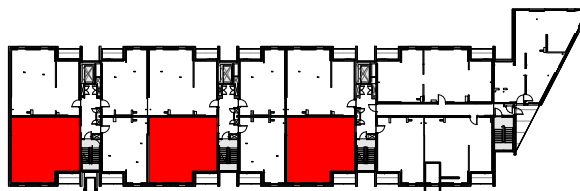
K/D/Living Room - 34.1m² / 366.9ft²

Bathroom - 5.5m² / 59.2ft²

Terrace - 3.9m² / 42.0ft²

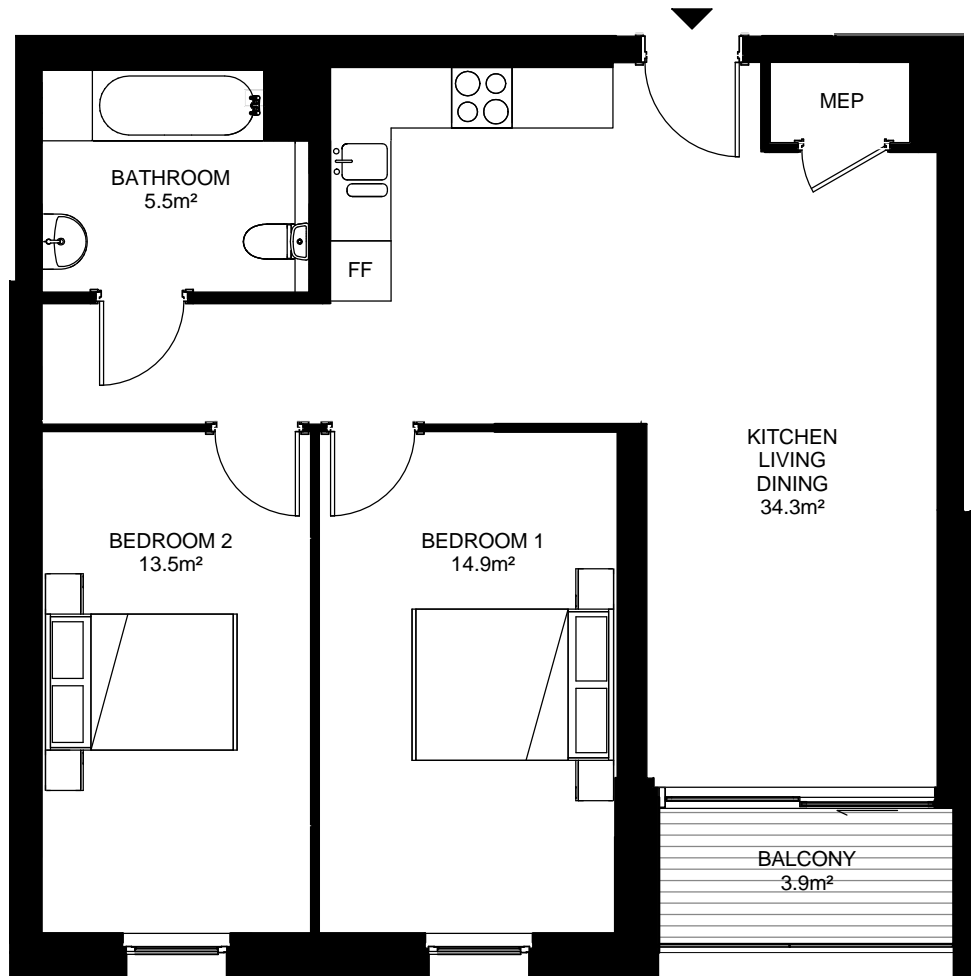
Additional information:

- Communal lift access
- Balcony Terrace
- Council Tax Band = E



L01-L05

Churchyard Row, London, SE11



Apartment 4, 3 Churchyard Row
Apartment 7, 3 Churchyard Row
Apartment 10, 3 Churchyard Row
Apartment 13, 3 Churchyard Row
Apartment 16, 3 Churchyard Row

1 x First Floor
1 x Second Floor
1 x Third Floor
1 x Fourth Floor
1 x Fifth Floor

2 Bed / 4 Person - 71.7 m² / 771.5ft²

Bedroom 1 - 14.9m² / 160.3ft²

Bedroom 2 - 13.5m² / 145.3ft²

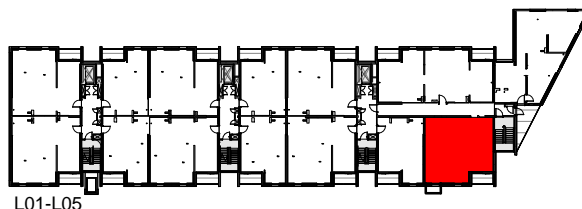
K/D/Living Room - 34.3m² / 369.1ft²

Bathroom - 5.5m² / 59.2ft²

Terrace - 3.9m² / 42.0ft²

Additional information:

- Communal lift access
- Balcony Terrace
- Council Tax Band = E



Churchyard Row, London, SE11

Apartment 3, 1 Churchyard Row
Apartment 6, 1 Churchyard Row
Apartment 9, 1 Churchyard Row
Apartment 12, 1 Churchyard Row
Apartment 15, 1 Churchyard Row

1 x First Floor
1 x Second Floor
1 x Third Floor
1 x Fourth Floor
1 x Fifth Floor

3 Bed / 5 Person - 93.7 m² / 1008.2ft²

Bedroom 1 - 16.9m² / 181.8ft²

Bedroom 2 - 9.1m² / 97.9ft²

Bedroom 3 - 10.6m² / 114.1ft²

K/D/Living Room - 31.7m² / 341.1ft²

Bathroom 1 - 5.5m² / 59.2ft²

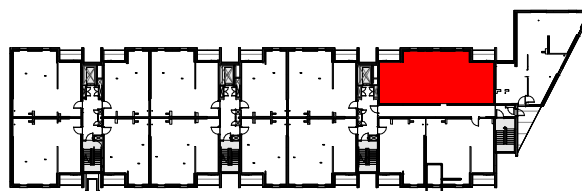
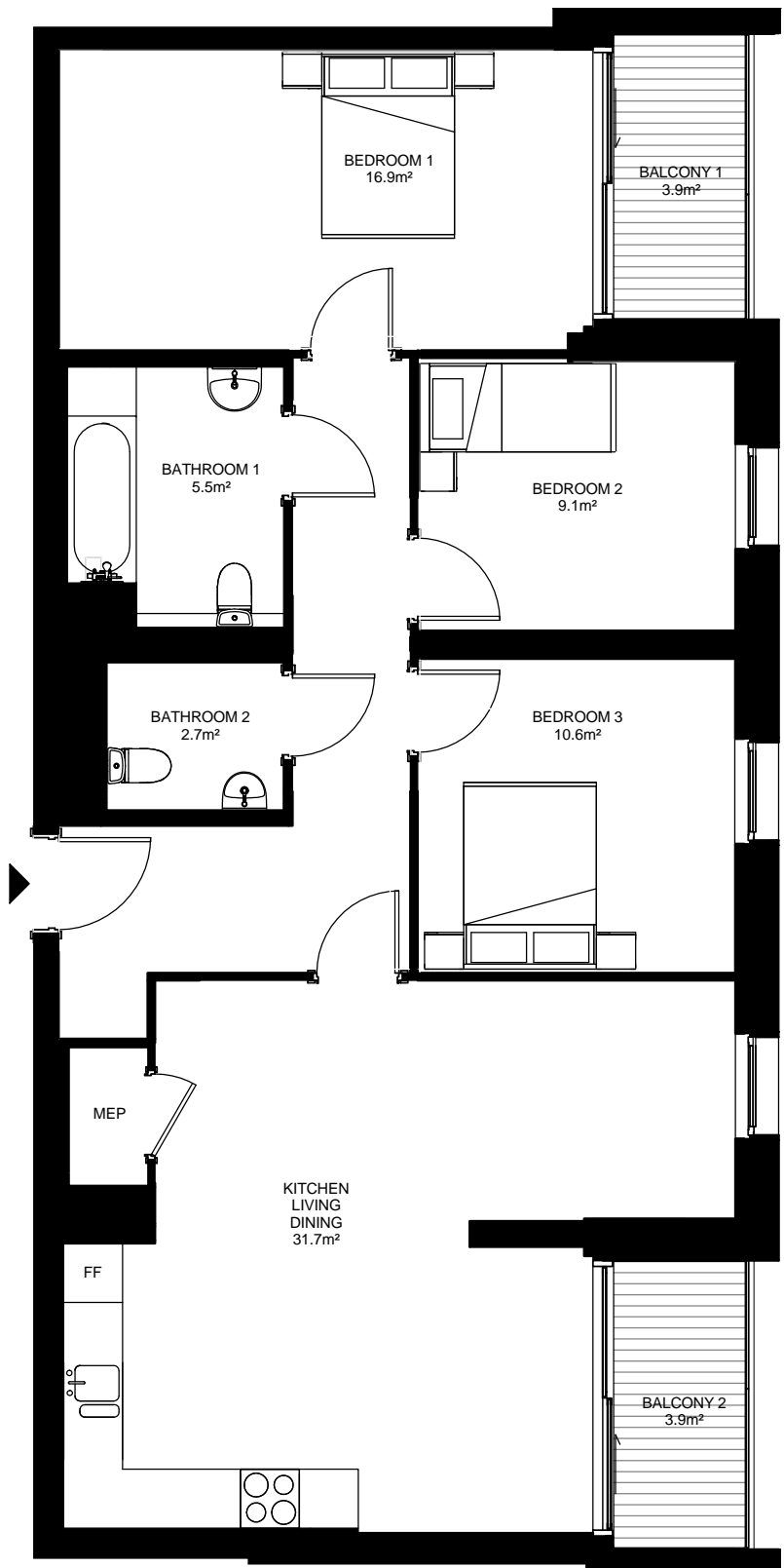
Bathroom 2 - 2.9m² / 29.1ft²

Balcony 1 - 3.9m² / 42.0ft²

Balcony 1 - 3.9m² / 42.0ft²

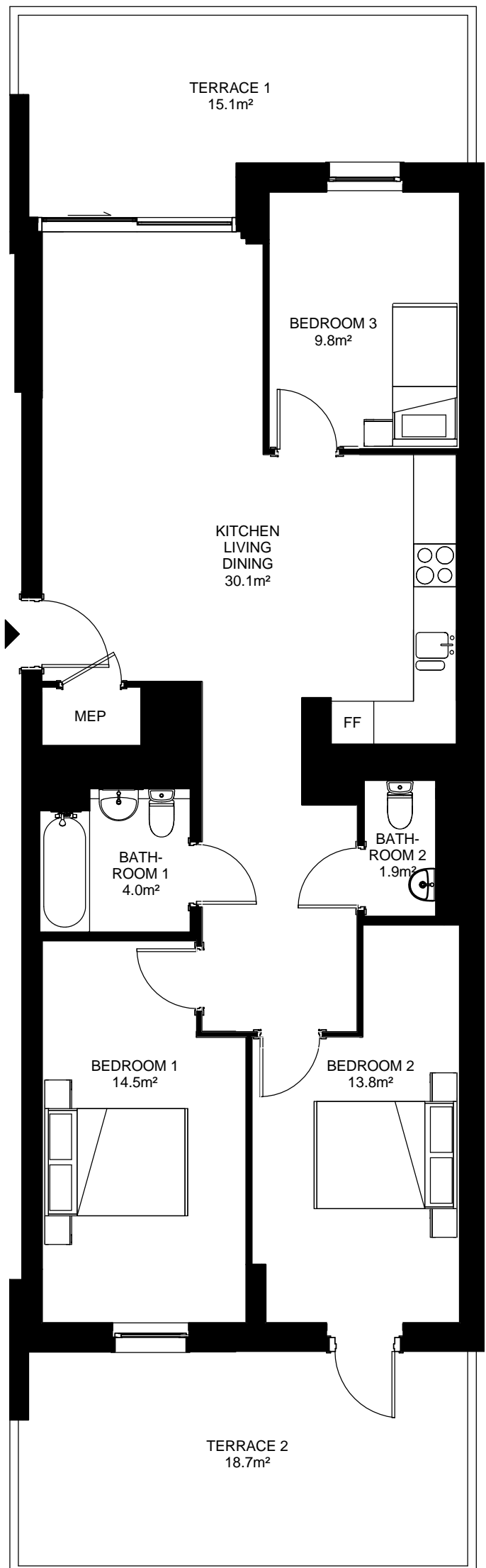
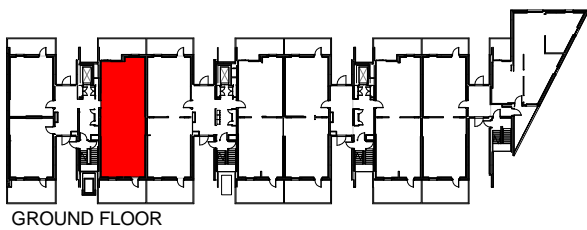
Additional information:

- Communal lift access
- Balcony Terrace
- Council Tax Band = F



L01-L05

Churchyard Row, London, SE11



Apartment 85, 7 Churchyard Row

1 x Ground Floor

3 Bed / 5 Person - 90.7 m² / 975.9ft²

Bedroom 1 - 14.5m² / 156.0ft²

Bedroom 2 - 13.8m² / 148.5ft²

Bedroom 3 - 9.8m² / 105.4ft²

K/D/Living Room - 30.1m² / 323.9ft²

Bathroom 1 - 4.0m² / 43.0ft²

Bathroom 2 - 1.9m² / 20.4ft²

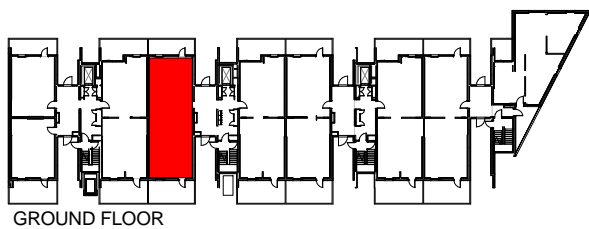
Terrace 1 - 15.1m² / 162.5ft²

Terrace 2 - 18.7m² / 201.2ft²

Additional information:

- Communal lift access
- Balcony Terrace
- Council Tax Band = F

Churchyard Row, London, SE11



Apartment 51, 5 Churchyard Row

1 x Ground Floor

3 Bed / 5 Person - 89.5 m² / 963.0ft²

Bedroom 1 - 15.4m² / 165.7ft²

Bedroom 2 - 14.0m² / 150.6ft²

Bedroom 3 - 10.2m² / 109.8ft²

K/D/Living Room - 30.6m² / 329.3ft²

Bathroom 1 - 4.0m² / 43.0ft²

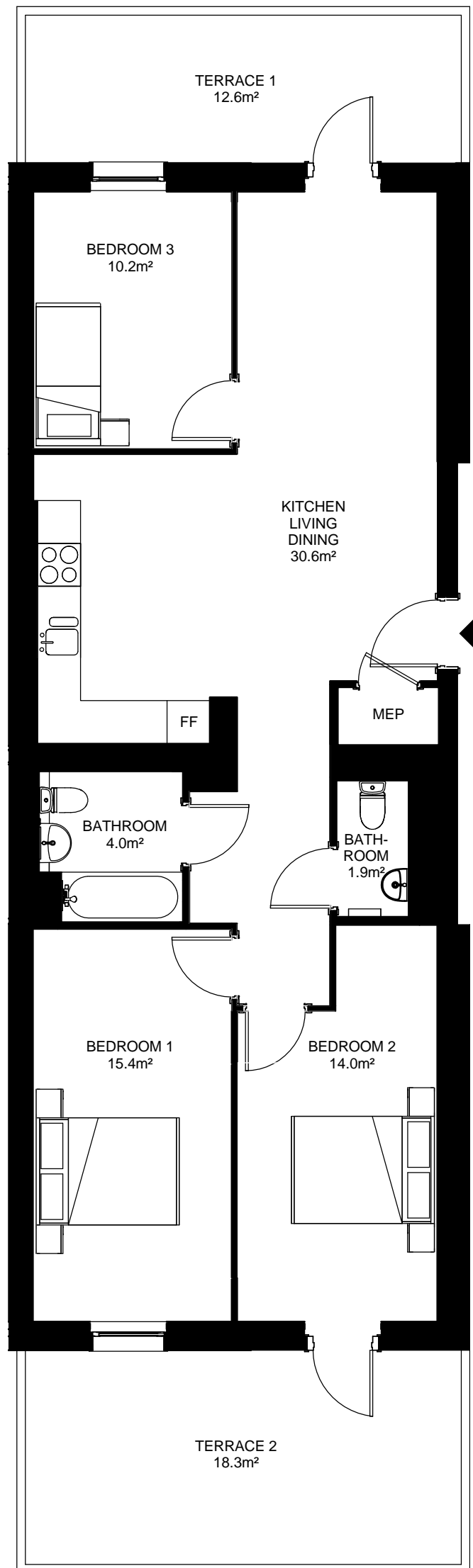
Bathroom 2 - 1.9m² / 20.4ft²

Terrace 1 - 12.6m² / 135.6ft²

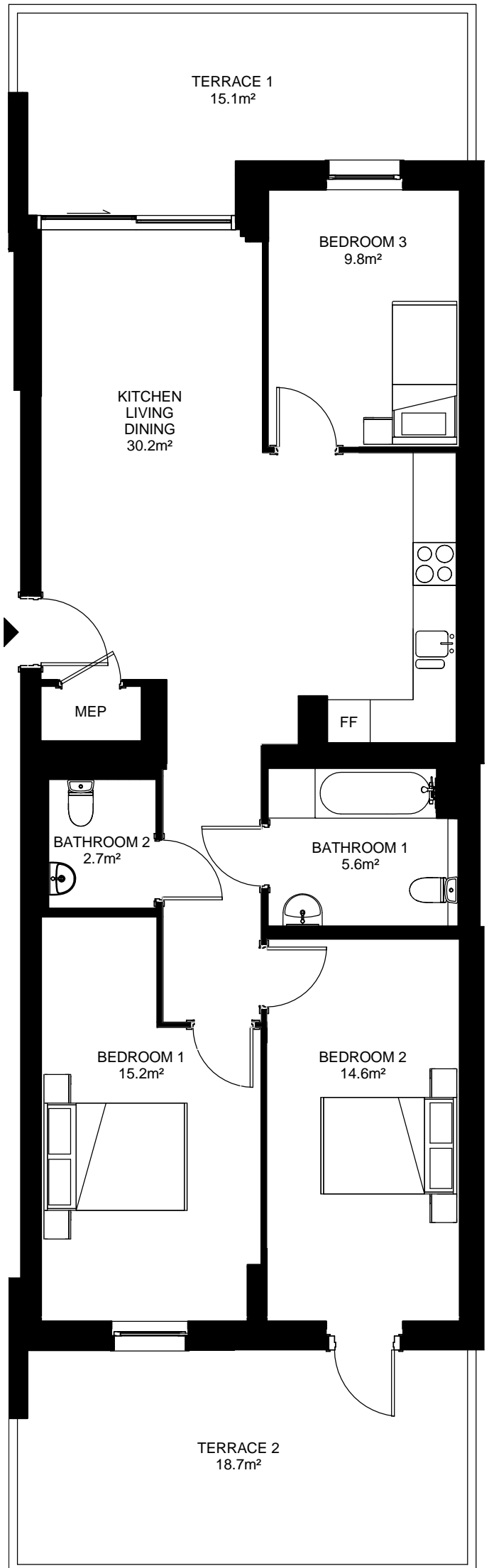
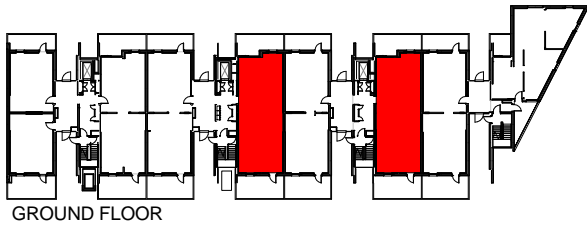
Terrace 2 - 18.3m² / 196.9ft²

Additional information:

- Communal lift access
- Balcony Terrace
- Council Tax Band = F



Churchyard Row, London, SE11



Apartment 25, 3 Churchyard Row Apartment 52, 5 Churchyard Row

2 x Ground Floor

3 Bed / 5 Person - 90.3 m² / 974.9ft²

Bedroom 1 - 15.2m² / 163.6ft²

Bedroom 2 - 14.6m² / 157.1ft²

Bedroom 3 - 9.8m² / 105.4ft²

K/D/Living Room - 30.2m² / 325.0ft²

Bathroom 1 - 4.0m² / 43.0ft²

Bathroom 2 - 1.9m² / 20.4ft²

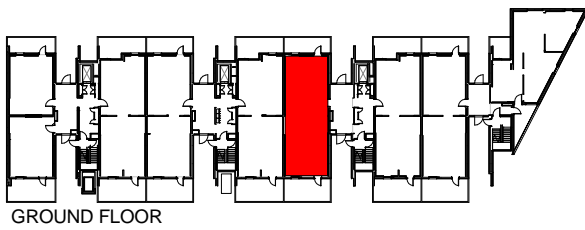
Terrace 1 - 15.1m² / 162.5ft²

Terrace 2 - 18.7m² / 201.2ft²

Additional information:

- Communal lift access
- Balcony Terrace
- Council Tax Band = F

Churchyard Row, London, SE11



Apartment 24, 3 Churchyard Row

1 x Ground Floor

3 Bed / 5 Person - 89.5 m² / 963.0ft²

Bedroom 1 - 15.4m² / 165.7ft²

Bedroom 2 - 13.4m² / 144.2ft²

Bedroom 3 - 9.9m² / 106.5ft²

K/D/Living Room - 31.0m² / 333.6ft²

Bathroom 1 - 5.4m² / 60.3ft²

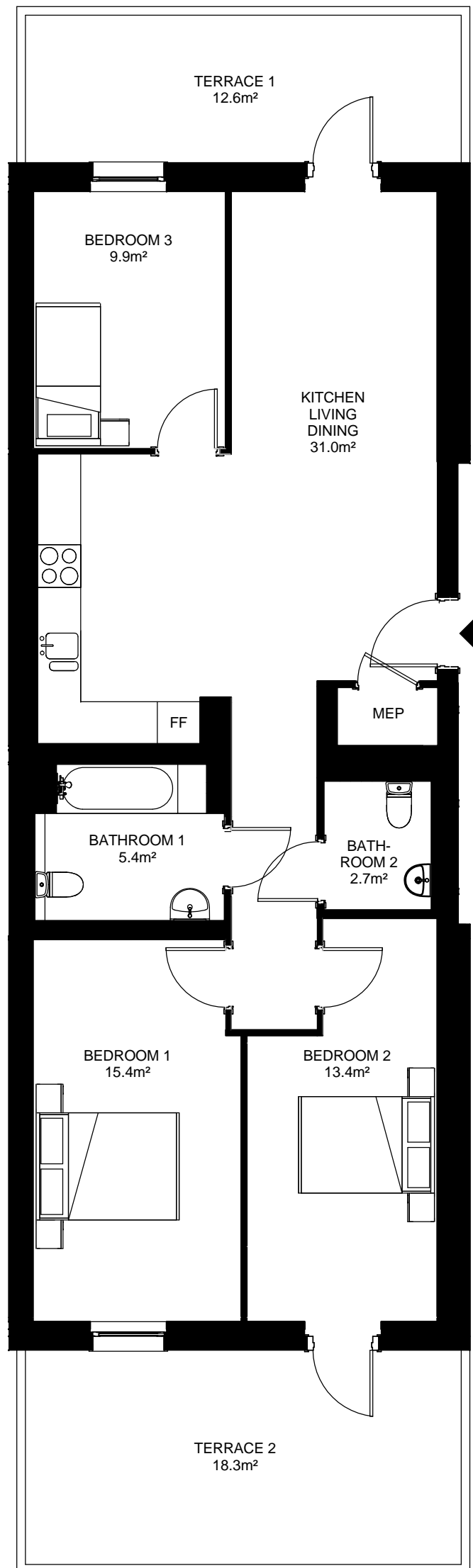
Bathroom 2 - 2.7m² / 29.1ft²

Terrace 1 - 12.6m² / 135.6ft²

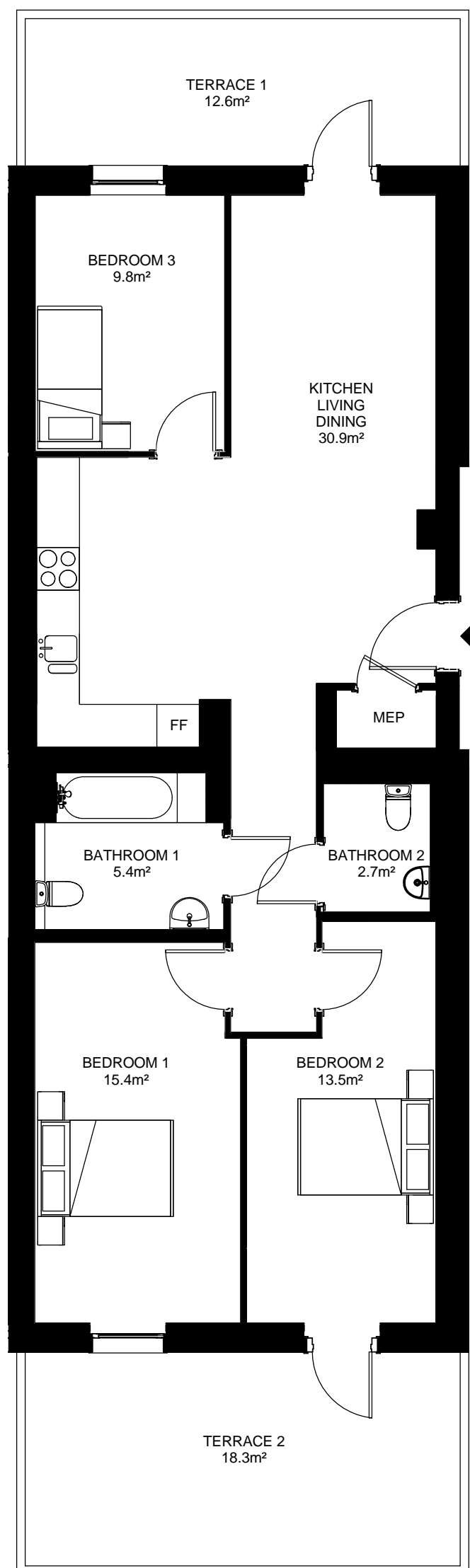
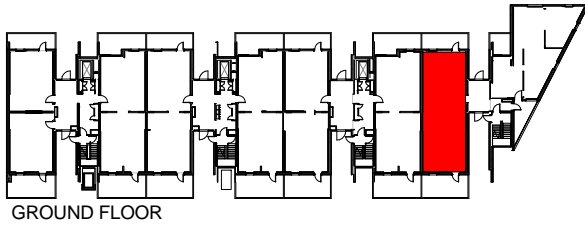
Terrace 2 - 18.3m² / 169.9ft²

Additional information:

- Communal lift access
- Balcony Terrace
- Council Tax Band = F



Churchyard Row, London, SE11



Apartment 1, 1 Churchyard Row

1 x Ground Floor

3 Bed / 5 Person - 89.5 m² / 963.0ft²

Bedroom 1 - 15.4m² / 165.7ft²

Bedroom 2 - 13.5m² / 145.3ft²

Bedroom 3 - 9.8m² / 105.4ft²

K/D/Living Room - 30.9m² / 332.5ft²

Bathroom 1 - 5.4m² / 60.3ft²

Bathroom 2 - 2.7m² / 29.1ft²

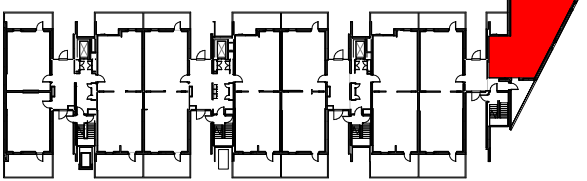
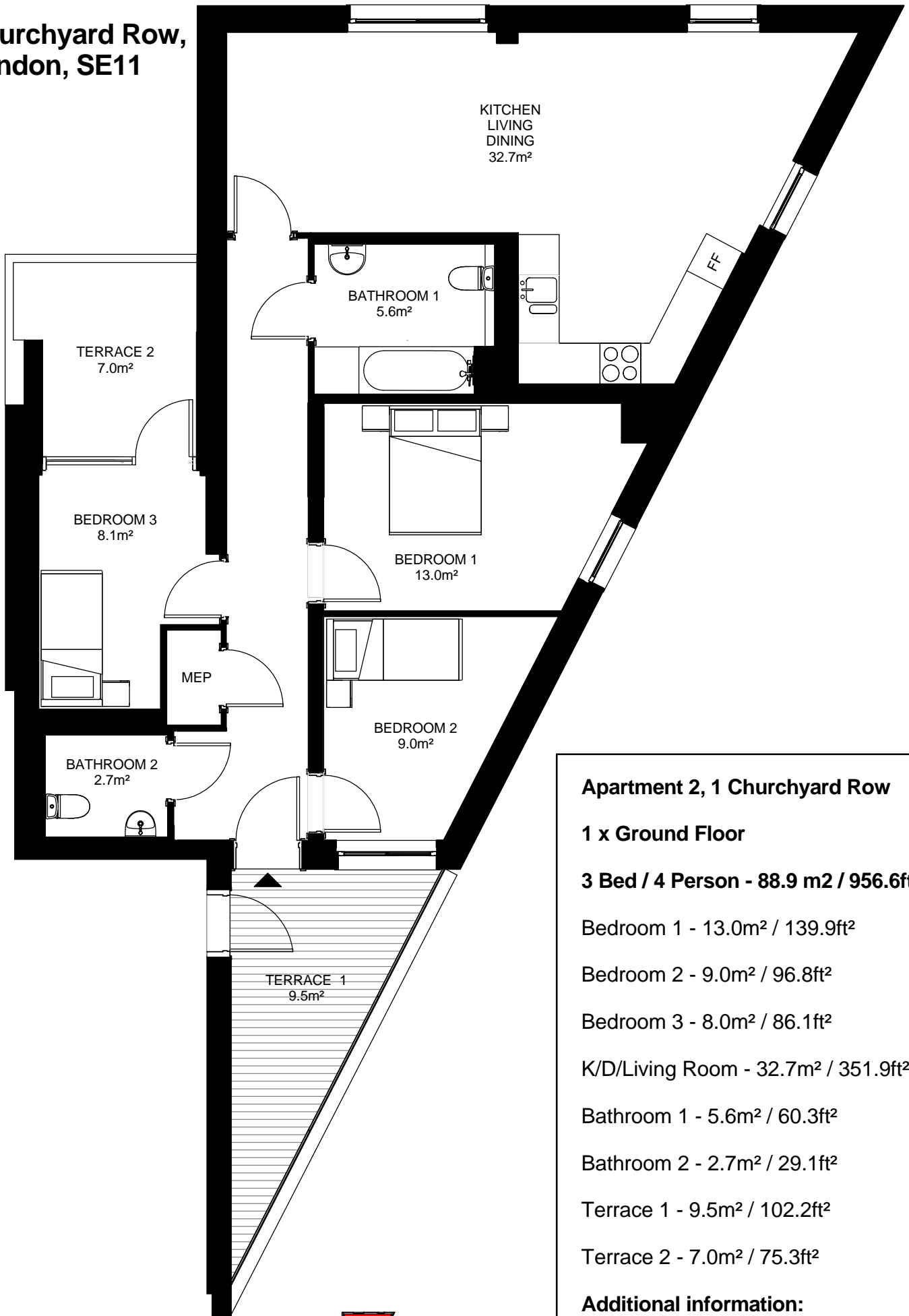
Terrace 1 - 12.6m² / 135.6ft²

Terrace 2 - 18.3m² / 169.9ft²

Additional information:

- Communal lift access
(through 3 Churchyard Row)
- Balcony Terrace
- Council Tax Band = F

**Churchyard Row,
London, SE11**



GROUND FLOOR

Apartment 2, 1 Churchyard Row

1 x Ground Floor

3 Bed / 4 Person - 88.9 m² / 956.6ft²

Bedroom 1 - 13.0m² / 139.9ft²

Bedroom 2 - 9.0m² / 96.8ft²

Bedroom 3 - 8.0m² / 86.1ft²

K/D/Living Room - 32.7m² / 351.9ft²

Bathroom 1 - 5.6m² / 60.3ft²

Bathroom 2 - 2.7m² / 29.1ft²

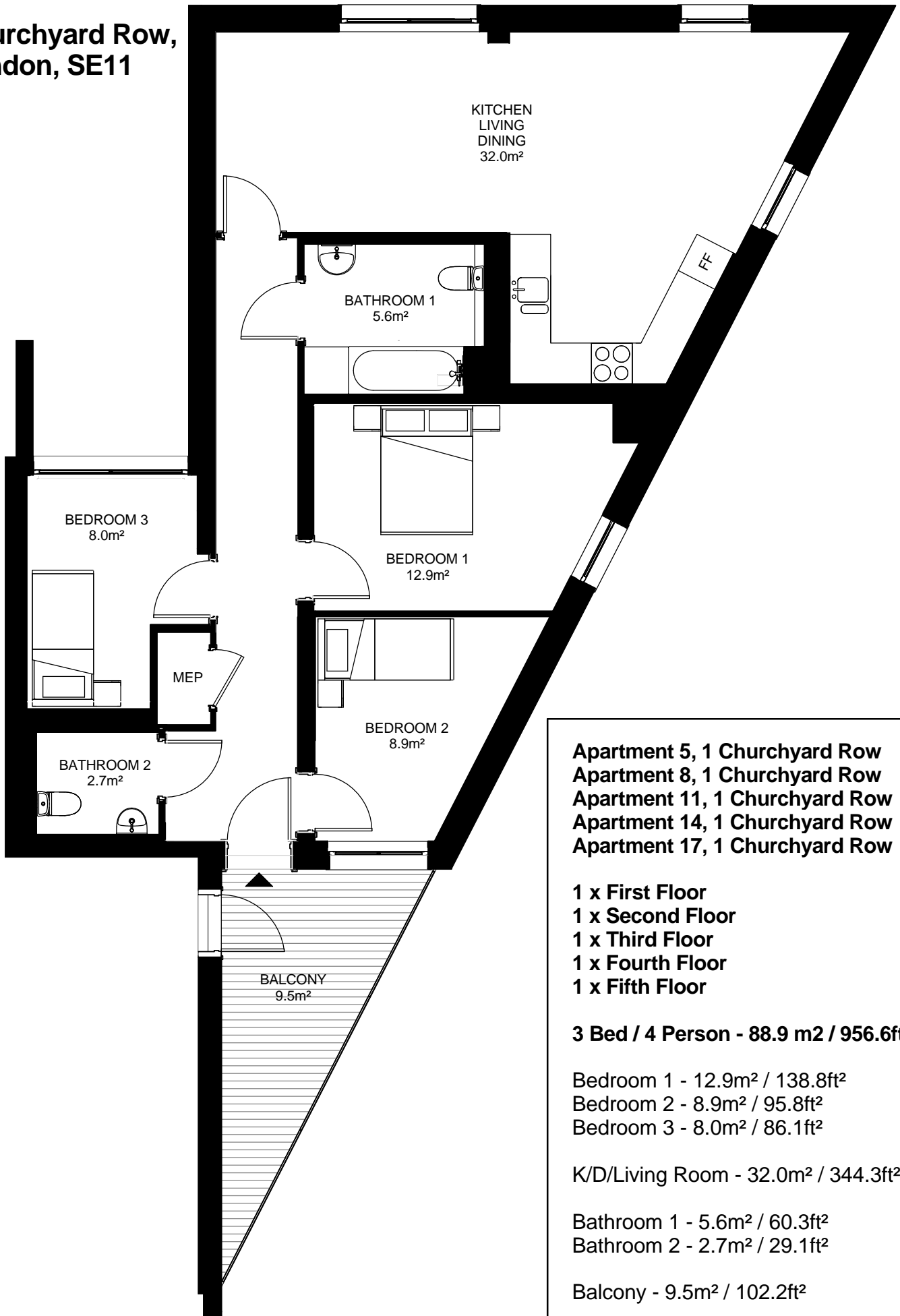
Terrace 1 - 9.5m² / 102.2ft²

Terrace 2 - 7.0m² / 75.3ft²

Additional information:

- Communal lift access (through 3 Churchyard Row)
- Balcony Terrace
- Council Tax Band = F

**Churchyard Row,
London, SE11**



**Apartment 5, 1 Churchyard Row
Apartment 8, 1 Churchyard Row
Apartment 11, 1 Churchyard Row
Apartment 14, 1 Churchyard Row
Apartment 17, 1 Churchyard Row**

**1 x First Floor
1 x Second Floor
1 x Third Floor
1 x Fourth Floor
1 x Fifth Floor**

3 Bed / 4 Person - 88.9 m2 / 956.6ft²

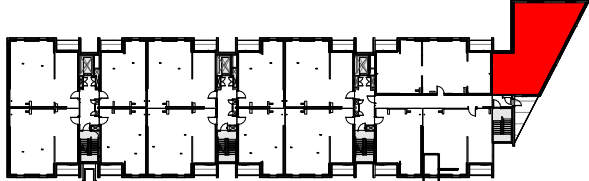
Bedroom 1 - 12.9m² / 138.8ft²
 Bedroom 2 - 8.9m² / 95.8ft²
 Bedroom 3 - 8.0m² / 86.1ft²

K/D/Living Room - 32.0m² / 344.3ft²

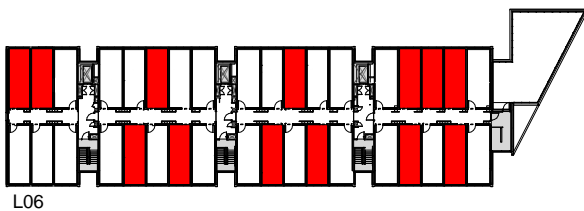
Bathroom 1 - 5.6m² / 60.3ft²
 Bathroom 2 - 2.7m² / 29.1ft²

Balcony - 9.5m² / 102.2ft²

Additional information:
 -Communal lift access
 -Balcony Terrace
 -Council Tax Band = E



Churchyard Row, London, SE11



**Apartment 18, 1 Churchyard Row
Apartment 20, 1 Churchyard Row
Apartment 21, 1 Churchyard Row**

**Apartment 41, 3 Churchyard Row
Apartment 44, 3 Churchyard Row
Apartment 49, 3 Churchyard Row
Apartment 50, 3 Churchyard Row**

**Apartment 73, 5 Churchyard Row
Apartment 76, 5 Churchyard Row
Apartment 82, 5 Churchyard Row**

**Apartment 106, 7 Churchyard Row
Apartment 108, 7 Churchyard Row
Apartment 115, 7 Churchyard Row**

13 x Sixth Floor

1 Bed / 2 Person - 37.9 m² / 407.8ft²

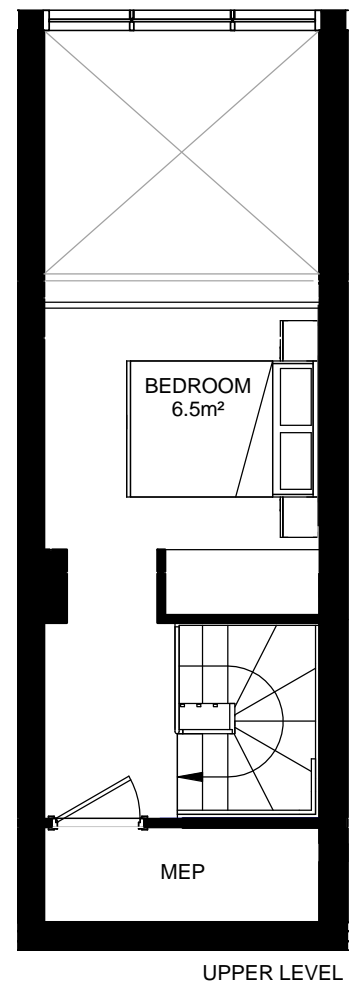
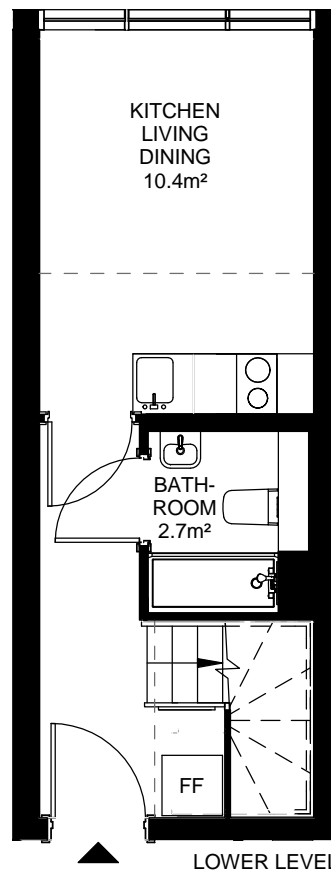
Bedroom - 6.5m² / 69.9ft²

K/D/Living Room - 10.4m² / 111.9ft²

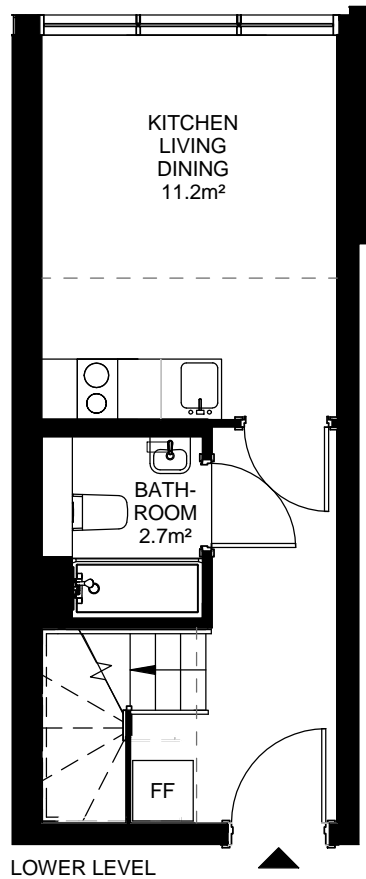
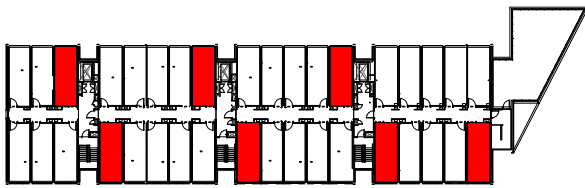
Bathroom - 2.7m² / 29.1ft²

Additional information:

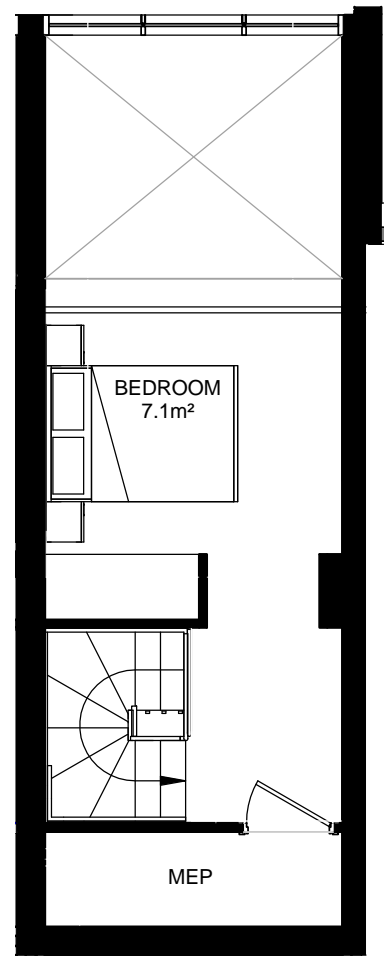
- Communal lift access
- Balcony Terrace
- Council Tax Band = D



Churchyard Row, London, SE11



LOWER LEVEL



UPPER LEVEL

Apartment 23, 1 Churchyard Row

**Apartment 45, 3 Churchyard Row
Apartment 48, 3 Churchyard Row**

**Apartment 77, 5 Churchyard Row
Apartment 80, 5 Churchyard Row**

**Apartment 110, 7 Churchyard Row
Apartment 113, 7 Churchyard Row**

7 x Sixth Floor

1 Bed / 2 Person - 40.8 m² / 439.0ft²

Bedroom - 7.1m² / 76.4ft²

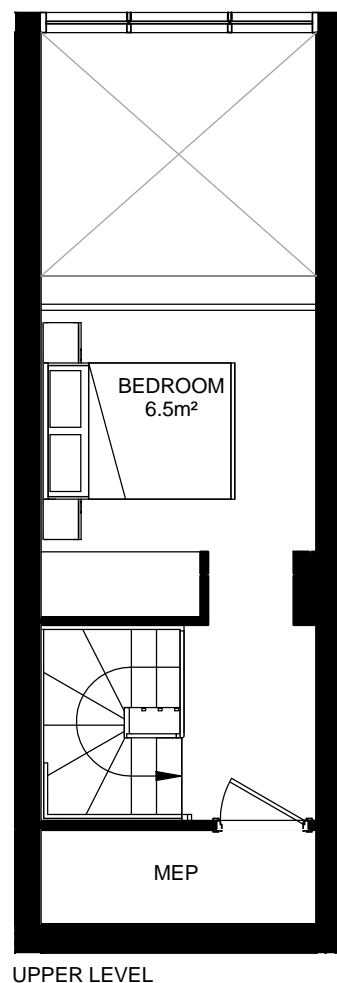
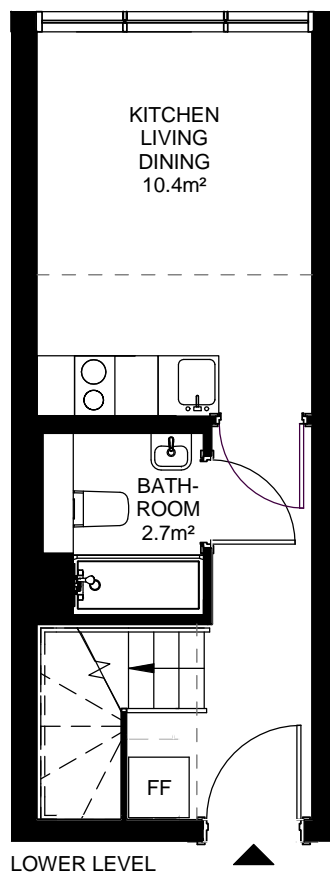
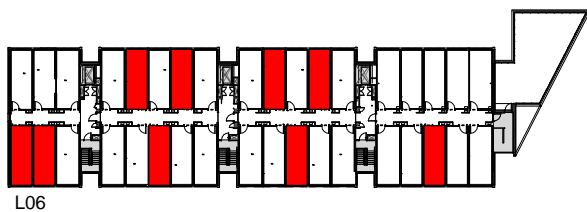
K/D/Living Room - 11.2m² / 120.5ft²

Bathroom - 2.7m² / 29.1ft²

Additional information:

- Communal lift access
- Balcony Terrace
- Council Tax Band = D

Churchyard Row, London, SE11



Apartment 19, 1 Churchyard Row

**Apartment 42, 3 Churchyard Row
Apartment 43, 3 Churchyard Row**

**Apartment 74, 5 Churchyard Row
Apartment 75, 5 Churchyard Row
Apartment 81, 5 Churchyard Row**

**Apartment 107, 7 Churchyard Row
Apartment 109, 7 Churchyard Row
Apartment 114, 7 Churchyard Row**

9 x Sixth Floor

1 Bed / 2 Person - 37.9 m² / 407.8ft²

Bedroom - 6.5m² / 69.9ft²

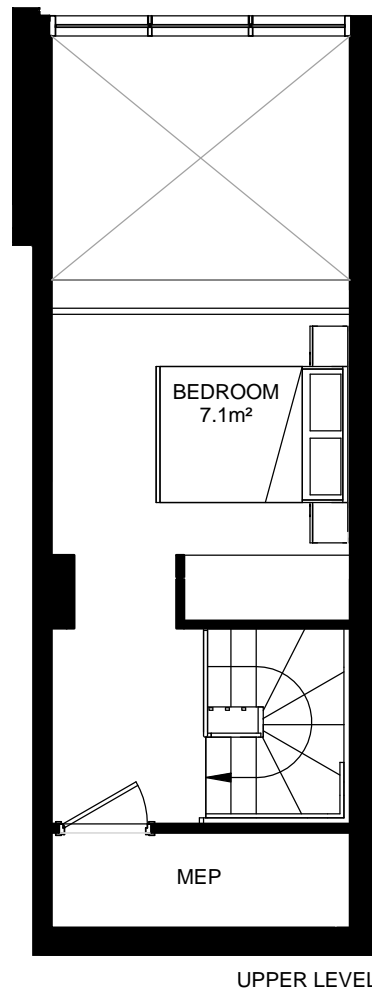
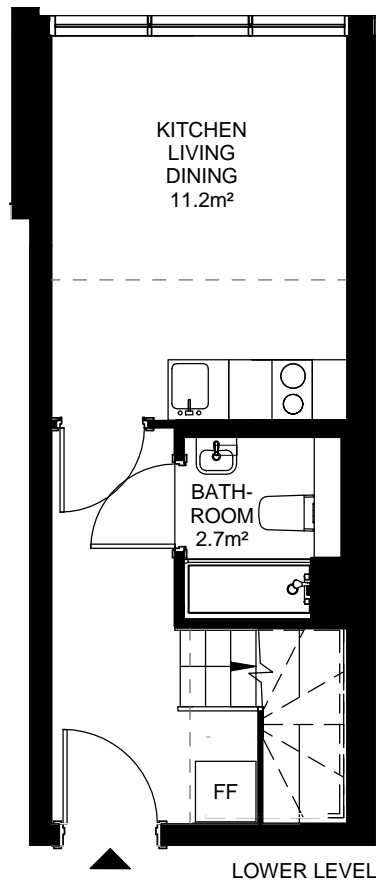
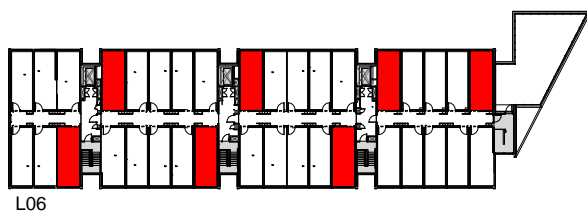
K/D/Living Room - 10.4m² / 111.9ft²

Bathroom - 2.7m² / 29.1ft²

Additional information:

- Communal lift access
- Balcony Terrace
- Council Tax Band = D

Churchyard Row, London, SE11



Apartment 22, 1 Churchyard Row

**Apartment 46, 3 Churchyard Row
Apartment 47, 3 Churchyard Row**

**Apartment 78, 5 Churchyard Row
Apartment 79, 5 Churchyard Row**

**Apartment 111, 7 Churchyard Row
Apartment 112, 7 Churchyard Row**

7 x Sixth Floor

1 Bed / 2 Person - 40.8 m² / 439.0ft²

Bedroom - 7.1m² / 76.4ft²

K/D/Living Room - 11.2m² / 120.5ft²

Bathroom - 2.7m² / 29.1ft²

Additional information:

- Communal lift access
- Balcony Terrace
- Council Tax Band = D